

Rushcroft Road, Brixton, SW2

4 bedroom flat to let

£850 Per Week

Furnished

Property Details

A beautiful four bedroom flat set within a charming converted Victorian building. This sleek flat comprises four large double bedrooms with large windows, a modern open plan kitchen / reception room, two bathrooms with separate showers and one having a bath. Living here you'll be located within the heart of Brixton which means you will be able to reach all of the amenities that come with it very easily such as the vibrant shops and bars of Brixton village and the famous Ritzy cinema. The flat would be ideal for anyone who requires rapid transport links into central London as Brixton underground station is easily reached by foot from the property.

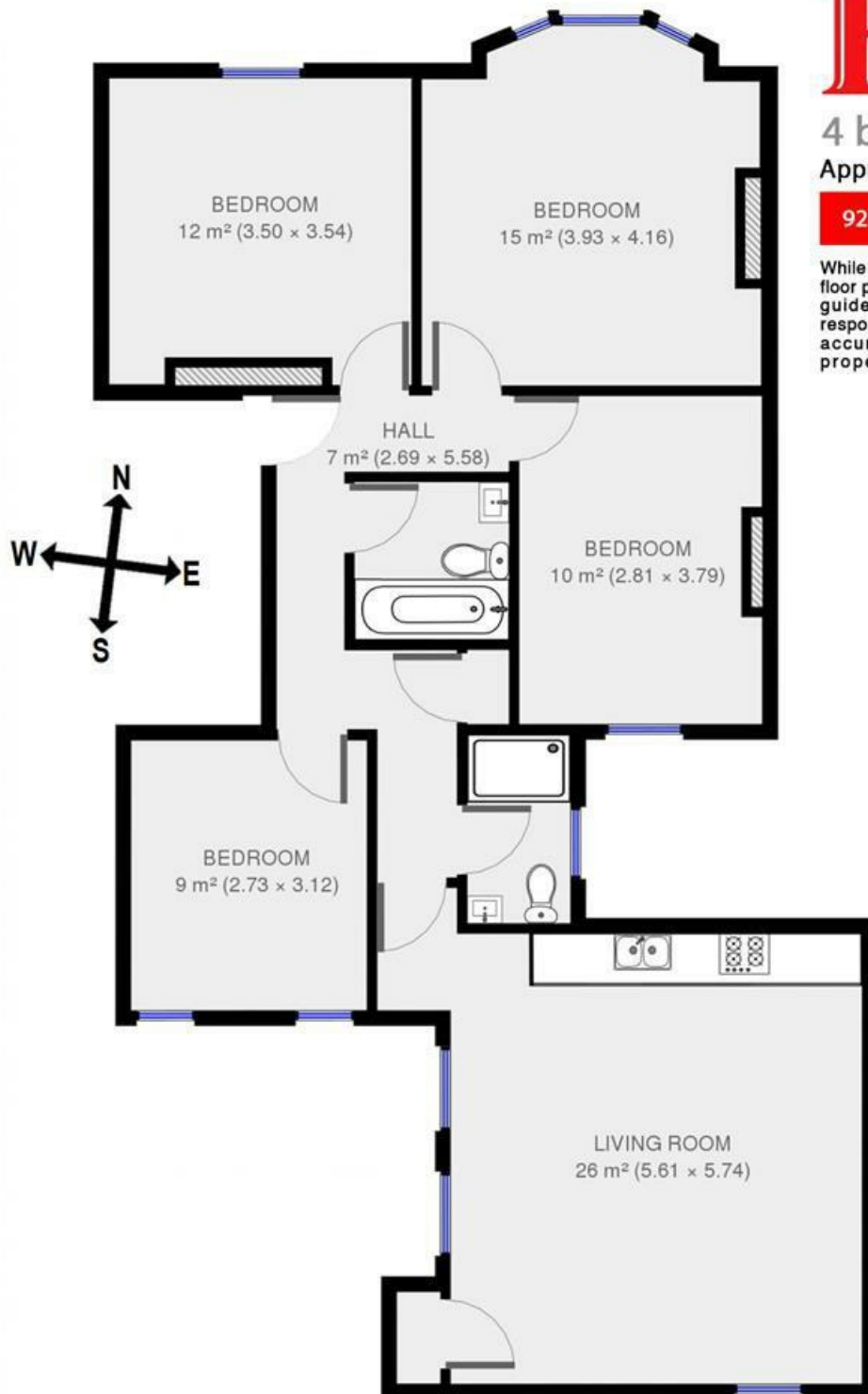
Council tax band D EPC rating C (80)

Features

- Four double bedrooms
- Victorian
- Close to Brixton underground station
- Open plan kitchen / reception
- Bright and airy throughout



Rushcroft Road, Brixton, SW2



4 bed flat.

Approx internal area:

926 sqft 86 sqm

While we do try our very best, floor plans are produced as a guide only and we take no responsibility for the precise accuracy with which any property is represented

Rushcroft Road

Rushcroft Road, Brixton, SW2

